



**Alliance Texas/Haslet Accessibility Improvement
Project**
Draft Environmental Assessment Notice of Availability and Public Hearing

**Notice of
Draft Environmental Assessment Available for Public Review
and
Public Hearing**

ALLIANCE TEXAS/HASLET ACCESSIBILITY IMPROVEMENT PROJECT

From: Approximately 3,500 feet west of FM 156 to I-35W and

From: Intermodal Parkway to Haslet Parkway

CSJs: 0902-90-020, 0902-90-021, 0902-90-141

Tarrant County, Texas

The City of Haslet, Texas and the North Central Texas Council of Governments (NCTCOG) in conjunction with the Texas Department of Transportation (TxDOT), as the lead agency, are proposing to reconstruct Avondale-Haslet Road from the Haslet city limits to FM 156, to extend Avondale-Haslet Road to I-35W, and extend Intermodal Parkway in Tarrant County, Texas. This notice advises the public that a draft environmental assessment (EA) is available for public review and that TxDOT will be conducting a public hearing on the proposed project at Haslet Elementary, 501 Schoolhouse Road, Haslet, Texas 76052. The hearing will be held on July 25, 2019 at 6:00 p.m. Displays will be available for viewing at 6:00 p.m. with the formal hearing starting at 6:30 p.m. The purpose of the hearing is to present the planned improvements and to receive public comment on the proposed project.

The project involves the reconstruction and widening of Avondale-Haslet Road to a 4-lane divided roadway from Haslet city limits (approximately 3,500 feet west of FM 156) to FM 156. Also, the project includes the extension of Avondale-Haslet Road (4-lane divided roadway) from FM 156 to I-35W (Proposed Haslet Parkway) and the extension of Intermodal Parkway southward to proposed Haslet Parkway. Intermodal Parkway would be a 6-lane divided roadway.

The existing right of way width of Avondale-Haslet Road is approximately 50 feet, expanding to approximately 150 feet at the intersection of FM 156. New right of way will be acquired for the remaining portions of the project. Although additional right-of-way is required, no residential or non-residential structures would be displaced. Information concerning services and benefits available to affected property owners and information about the tentative schedule for right-of-way acquisition may be obtained from the City of Haslet at the address listed below.

The project would encroach on wetlands and includes installing multiple bridge class culverts and bridges across floodplains and intermittent and ephemeral streams.

The draft EA, maps showing the project location and design, tentative construction schedules, and other information regarding the project are on file and available for inspection Monday through Friday between the hours of 8:00 a.m. and 5:00 p.m. at TxDOT Fort Worth North Tarrant County Area Office 2501 West Euless Blvd, Euless Texas 76040, the City of Haslet City Hall, 101 Main St., Haslet, Texas 76052, or at <https://www.txdot.gov/inside-txdot/get-involved/about/hearings-meetings/fort-worth/072519.html>. This information also will be available for inspection at the hearing. Verbal and written comments from the public regarding the project are requested and may be presented at the hearing or submitted in person or by mail



Draft Environmental Assessment Notice of Availability and Public Hearing

to the TxDOT Fort Worth District Office or the City of Haslet City Hall. Comments must be received on or before August 9, 2019 to be part of the official hearing record.

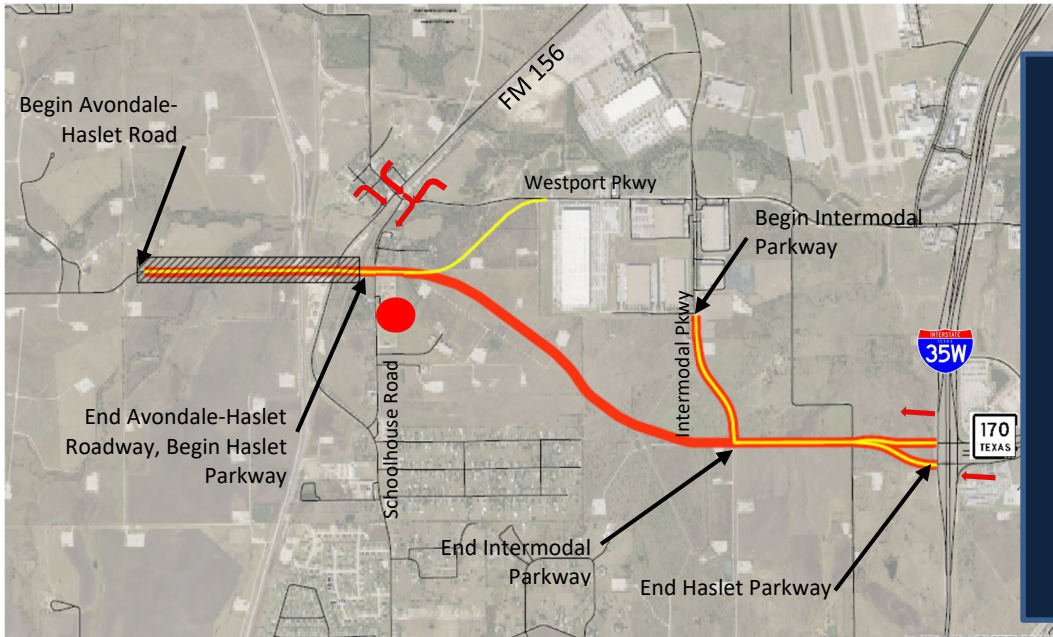
The hearing will be conducted in English. Persons interested in attending the hearing who have special communication or accommodation needs, such the need for an interpreter, are encouraged to contact Travis Attanasio, P.E , City of Haslet Engineer at 817-439-5931, ext. 112, or at tattanasio@haslet.org. Requests should be made at least two days prior to the hearing. Every reasonable effort will be made to accommodate these needs.

If you have any general questions or concerns regarding the proposed project or the hearing, please contact Travis Attanasio, P.E., City of Haslet Engineer at 817-439-5931, ext. 112, or at tattanasio@haslet.org.

The environmental review, consultation, and other actions required by applicable Federal environmental laws for this project are being, or have been, carried-out by TxDOT pursuant to 23 U.S.C. 327 and a Memorandum of Understanding dated December 16, 2014, and executed by FHWA and TxDOT.



ALLIANCETEXAS/HASLET ACCESSIBILITY IMPROVEMENT PROJECT PUBLIC HEARING

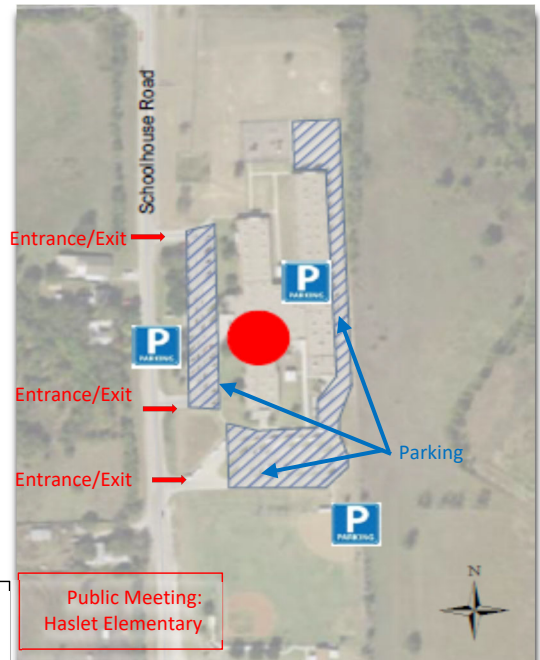
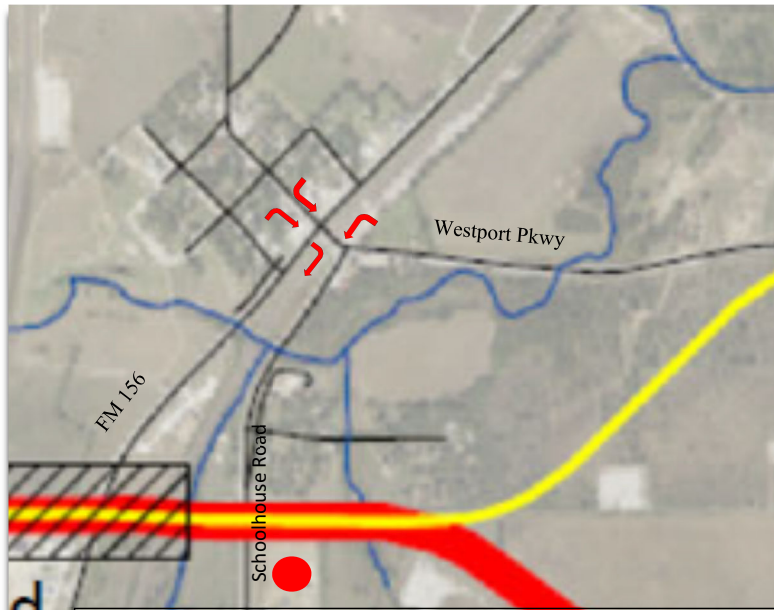


Thursday, July 25, 2019
Haslet Elementary
501 Schoolhouse Road
Haslet, Texas, 76052

Public Hearing

Open House: 6 p.m.
Formal Presentation: 6:30 p.m.

Contact:
 Travis Attanasio, P.E.
 City of Haslet
 (817) 439-5931
 tattanasio@haslet.org



	Direction Signs		Preferred Alternative
	Public Hearing Location		Additional Alternative
	Parking		Reconstruction/Widening Location

DIRECTIONS:

From FM 156: Take the Westport Pkwy exit and turn right on Schoolhouse Road; turn left into school entrance

From I-35W from the north: Take Westport Pkwy exit; turn right on Westport Pkwy and go approximately 2 miles until Schoolhouse Road; turn left on Schoolhouse Road; turn left into school entrance

From I-35W from the south: Take Westport Pkwy exit; turn left on Westport Pkwy and go approximately 2 miles until Schoolhouse Road; turn left on Schoolhouse Road; turn left into school entrance