



## Texas Division of Emergency Management State Situation Report

---

### New Information is in Blue Text

<b>Event Name</b>	21-0003 February Winter Weather 2021
<b>Date</b>	February 16, 2021
<b>Time</b>	0900
<b>Operational Period</b>	February 15, 2021- February 16, 2021
<b>Report Number</b>	5

Regions Affected	
<b>DPS Regions Affected</b>	1, 2, 3, 4, 5 & 6
<b>DDCs Active</b>	1, 2, 4, 6, 17, 20, 21 & 22

**STATEWIDE CURRENT SITUATION:** Texas continues experiencing large numbers of rolling power outages across the state to help reduce the burden on the power grid. Currently there are more than 3.1 million customers without power in Texas.

On February 15, Governor Abbott announced that the State of Texas is deploying maximum resources to local officials throughout the state to respond to severe winter weather and to restore power to our communities. State agencies are sending resources and personnel to help local officials clear roadways and to assist essential workers, such as healthcare professionals and power grid workers, in carrying out their essential duties.

Furthermore, Governor Abbott and the Texas Military Department have deployed the National Guard across Texas to conduct welfare checks and to assist local authorities in transitioning Texans in need to one of the 135 local warming centers that the state has helped establish across Texas.

On Sunday, Governor Abbott sought and received a waiver from the U.S. Department of Energy that allows Texas power generators to increase production. Unfortunately, some of those generators are unable to increase production at this time because their operations have been frozen by weather conditions. They are working to get their power production back on line.

“Due to the severe weather and freezing temperatures across our state, many power companies have been unable to generate power, whether it’s from coal, natural gas, or wind power,” said Governor Abbott. “ERCOT and the PUC are

working non-stop to restore power supply. The state has also deployed resources to assist Texans without power and to help essential workers continue to carry out their jobs. In the meantime, I encourage all Texans to continue to stay off the roads, and conserve energy as state agencies work with private providers to restore power as quickly as possible.”

The following resources have been deployed:

- Texas Department of Public Safety: 3,300 Troopers and 3,300 patrol vehicles responding statewide to events in areas adversely affected by winter weather
- Texas Military Department: 6 Winter Weather Packages consisting of 90 personnel, 28 High Mobility Multi-Wheeled Vehicles, 1 Field Light Ambulance, and 4 Wreckers
- Texas Parks and Wildlife Department: 585 personnel, 531 4x4 vehicles, 50 UAS, 1 aircraft and 9 K9 teams
- Texas A&M Forest Service: 83 personnel, 6 Motor Graders, and 58 4x4's
- Texas Department of Transportation: 2,314 personnel, 695 snowplows, 188 loaders, 55 Motor Graders and 757 4x4 vehicles
- Texas Emergency Medical Task Force: 1 AMBUS and 1 Ambulance Strike Team and 4 Severe Weather Packages consisting of 1 Task Force Leader, 1 MIST, 1 AMBUS and 1 Ambulance Strike Team each on stand-by

ERCOT's ability to provide power has been limited by the ability of private power generators of all sources, including natural gas, wind, and solar, to generate power for the grid. To avoid large scale blackouts and damage to the grid, the Electric Reliability Council of Texas began implementing outages to preserve the integrity of the power grid while the companies that generate power work to restore power generation.

Previously, Governor Abbott issued a disaster declaration in all 254 counties, deployed resources throughout the state, and ordered the Texas State Operations Center (SOC) to expand its daily operations to 24-hours a day.

The Governor also previously requested a Federal Emergency Declaration for Texas in response to the severe winter weather, which was granted by the Biden administration.

On February 14, Governor Abbott announced that the White House has issued a Federal Emergency Declaration for Texas in response to the severe winter weather throughout the state. The Governor submitted a request for this declaration on Saturday to assist the State in response efforts related to the storm.

This Federal Emergency Declaration authorizes the Federal Emergency Management Agency to provide emergency protective measures for mass care and sheltering and Direct Federal Assistance for all 254 counties in Texas.

On February 13, Governor Abbott provided an update from the Alternate State Operations Center on the severe winter weather that is impacting the State of Texas. The Governor noted that snow and ice are expected throughout Texas for the next few days and ultra-low temperatures will linger throughout the upcoming week — meaning that many road closures and extremely dangerous conditions are expected. The Governor also announced that he will request a Federal Emergency Declaration from the White House to make additional resources available for communities impacted by this weather event.

The Governor addressed power and energy concerns on Monday and Tuesday. Power companies already have crews in place, and other states have deployed power crews to Texas to assist in potential power outages. The Texas Railroad Commission has suspended regulations to ensure churches, hospitals, residences, and other human resource facilities have access to gas throughout the winter weather event. The State of Texas is asking Texans to begin conserving energy now to ensure power and energy are available early next week by unplugging devices when not in use, closing windows and blinds, and adjusting thermostats to 68 degrees or below. The Governor and Texas Division of Emergency Management (TDEM) Chief also discussed the increased risk of carbon monoxide poisoning in such conditions and urged Texans to avoid heating their homes with ovens or stovetops and only use generators or grills outdoors and away from windows.

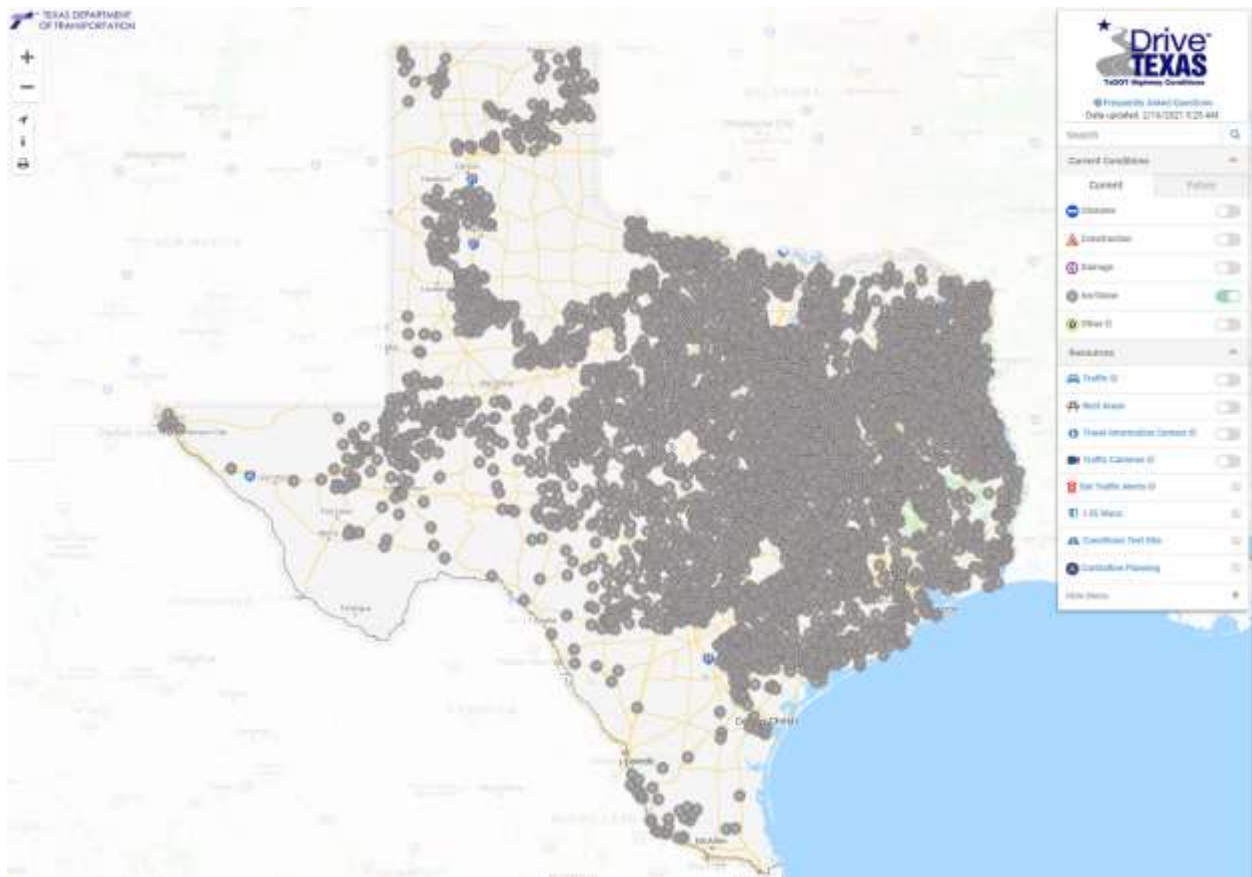
Local officials have established 34 warming centers in communities across the state and sent numerous vehicles, wreckers, ambulances, and personnel to assist in stranded motor operations and community support. Governor Abbott urged Texans to stay off the roads if they can and immediately call 800-525-5555 for roadside assistance if they become stranded on the road. The Texas Department of Public Safety has activated over 3,000 troopers that are working 24/7 to assist communities with their response. The Texas Military Department has also deployed Guardsmen to perform welfare checks in remote areas of the state.

On February 12, Governor Abbott issued a disaster declaration in all 254 counties in response to severe winter weather that is impacting Texas. The Governor is continuing to deploy state resources available to assist local officials in their response efforts, and has ordered the Texas State Operations Center (SOC) to expand its daily operations to 24-hours a day through the end of next week.

At the direction of the Governor, the Texas Division of Emergency Management has deployed the following state resources to support winter weather response operations:

- Texas Department of Transportation: Winter weather roadway preparation equipment and response crews as well as road condition monitoring.
- Texas Highway Patrol, Texas Department of Public Safety: Courtesy patrols to assist stranded motorists along major travel corridors.
- Texas Military Department: Winter weather equipment and personnel to support Amarillo, Wichita Falls, Abilene, Fort Worth, and Waco to assist in stranded motorist operations.

- Texas Parks and Wildlife Department: Four wheel drive vehicles and personnel to assist with stranded motorists along major travel corridors.
- Texas A&M Forest Service: Motor graders and personnel to assist with snow/ice clearance and saw crews to assist with removal of downed trees.
- Texas A&M Engineering Extension Service, Texas Task Force 1: Search and rescue equipment and teams.
- Public Utility Commission of Texas: Monitoring and reporting of power outages and monitoring of any issues impacting the power generation capability in the state.
- Texas Animal Health Commission: Response equipment and personnel to address livestock concerns due to frigid temperatures.



**OPERATIONAL PRIORITIES:**

1. Protect life and property.
2. Support rapid & effective response.
3. Collect and disseminate accurate incident information to improve decision-making.
4. Accurately track incident costs associated with assigned resources for cost recovery.

## **Region 1 (Includes DDCs 4, 5, 6, and 22)**

**DDC 4A Hurst:** (Includes: Denton, Erath, Hood, Johnson, Palo Pinto, Parker, Somervell, Tarrant and Wise Counties)

DDC 4A escalated to Level II. Most universities will be closed Monday. Schools are beginning to report closings, and more reports are expected by Monday morning. All COVID-19 testing sites are closed through Wednesday. Virtually all major roads and highways are reported to have patches of ice and snow. North Texas Expressway Express lanes have been closed.

**DDC 4B – Garland** (Includes: Collin, Dallas, Ellis, Hunt, Kaufman, Navarro and Rockwall Counties)

Due to the ongoing impacts of winter weather and the forecast for another round of winter weather impacts on Sunday, February 14th. Disaster District Emergency Operations Center (DDEOC) 4B activated to a Level III (Increased Readiness/Monitoring).

The Federal Aviation Administration (FAA) ordered a ground stop at the DFW Airport due to ice and wintery weather on Saturday, February 13.

TxDOT activated their EOC at DalTran for 24-hour operations at 5:00 PM on Sunday, February 14. County EOCs anticipate escalation to Level II on Sunday. Almost all cities within DDC 4B Garland have activated their EOC's to Level III for monitoring. Dallas Area Rapid Transit (DART) will modify their service due to winter weather, effective Sunday, February 14 at 11:00 PM until 11:59 PM on Monday, February 15.

**Dallas County:** The Dallas County Judge issued a disaster declaration and an executive order on February 15.

The City of Glen Heights issued a disaster declaration on February 15.

**DDC 5 – Mt. Pleasant** (Includes: Bowie, Cass, Delta, Franklin, Hopkins, Lamar, Morris, Red River and Titus Counties)

**Delta County:** A power restoration priority is at City of Cooper Water Distribution Plant for a power outage that has completely disrupted the water supply within the city.

**Hopkins County:** Hopkins County EMS AMBUS is in the process of relocating residents from the Birchwood Manor Nursing Facility to the Rock Creek Nursing Facility in Sulphur Springs. Cooper Fire Department and Delta County Sheriff's Office are assisting.

**Lamar County:** Lamar County has opened four warming centers. [There is a critical water level in the storage tank in the City of Paris due to the power outage.](#)

**DDC 6 – Tyler** (Includes: Anderson, Camp, Cherokee, Gregg, Harrison, Henderson, Marion, Panola, Rains, Rusk, Smith, Upshur, Van Zandt and Wood Counties)

A second winter storm is forecast to enter the area on Wednesday, February 17.

TxDOT is working to treat major roadways and has implemented a 24-hour operation schedule.

**Henderson County:** Henderson County issued a disaster declaration on February 14.

**DDC 22 – Sherman** (Includes: Cooke, Fannin and Grayson Counties)

[Dangerous wind chills across the district this morning. Another winter storm will arrive this afternoon bringing significant snow accumulation for the district and exacerbate the conditions from the previous storm yesterday morning.](#)

**Cooke County:** The City of Gainesville issued a disaster declaration on February 15.

**Region 2 (Includes DDCs 13, 14, 15, 16 Houston, 16 Texas City, 16 Conroe, and DDC Pierce)**

**DDC 13 – Bryan** (Includes: Brazos, Burleson, Grimes, Leon, Madison, Robertson and Washington Counties)

A wind chill warning is in effect beginning Sunday evening through noon on Tuesday. A hard freeze warning is in effect from Sunday evening until noon on Tuesday.

**DDC 14 – Lufkin** (Includes: Angelina, Houston, Jasper, Nacogdoches, Newton, Polk, Sabine, San Augustine, San Jacinto, Shelby, Trinity and Tyler Counties)

**Angelina County:** Hudson ISD will be closed on February 15.

**Houston County:** Grapeland ISD will be closed on February 15.

**Jasper County:** Jasper ISD will be closed on February 15-19.

**Newton County:** Newton ISD will be closed on February 15-16. Burkeville ISD and Deweyville ISD will be closed on February 15-19.

Newton County will be opening a warming center at the Iris and Ann Howard Civic Center located at 213 East Court Street in Newton, beginning at noon Monday and ending at noon on Wednesday. Red Cross will be sending support staff.

**Polk County:** Corrigan-Camden ISD will be closed on February 15-16.

**San Jacinto County:** Coldspring ISD will be closed on February 15-19.

**Shelby County:** Center ISD will be closed on February 15-19.

**Tyler County:** Tyler County issued a disaster declaration on February 14. Five ISDs in Tyler County will be closed on February 15-19.

**DDC 15 – Beaumont** (Includes: Hardin, Jefferson and Orange Counties)

DDC continues to monitor weather conditions. Sabine Pass ISD will be closed Monday, February 15 and Tuesday, February 16. The City of Bridge City will be closed Monday, February 15 and Tuesday, February 16. Vidor ISD will be closed on Monday and a 2 hour delayed start on February 16. Lamar State College in Orange will be closed both Monday and Tuesday.

City of Bridge City issued a disaster declaration on February 14.

**DDC 16A – Houston** (Includes: Chambers and Harris Counties)

Harris County has activated the EOC to Level 1. Houston Office of Emergency Management is also activated to Level 1.

**DDC 16B – Texas City** (Includes: Brazoria and Galveston Counties)

**Brazoria County:** Due to icy weather, the Alvin Community College campus will be closed February 15 & 16. The City of Danbury and Danbury ISD will be closed February 15 & 16. The City of Clute issued a disaster declaration on February 12.

**Galveston County:** Galveston ISD, Dickinson ISD, and Texas City ISD will be closed February 15 & 16. The City of Dickinson issued a disaster declaration on February 14.

The Salvation Army in the City of Galveston is open for up to 62 people during the upcoming cold weather. The shelter will shift from emergency overnight only to 24-hour operations. COVID-19 guidelines will be followed, and screening for entry will take place at the facility.

**DDC 16C – Conroe** (Includes: Liberty, Montgomery, Waller, Walker Counties)



**Walker County:** Walker County issued a Disaster Declaration for Severe Winter Weather on Friday, February 12. Warming Shelter opened at the Walker County Storm Shelter in Huntsville.

**DC 16D – Rosenberg** (Includes: Austin, Colorado, Fort Bend, Matagorda and Wharton Counties)

Disaster District Emergency Operations Center (DDEOC) 16D has activated to a Level I Virtual (Emergency Conditions)

TxDOT is working to treat major roadways and has implemented a 24-hour operation schedule. However; due to the hazards only life imminent operations remain in effect.

Almost all major roads, bridges, overpasses remain impassable

All schools, colleges, are closed until further notice

**Wharton County:** There were two multi-vehicle collisions on US 59 near the City of El Campo.

**Region 3 (Includes DDCs 19, 20, 21, and 24)**

**DDC 19 Laredo** (Includes: Jim Hogg, Starr, Webb and Zapata Counties)

DDC 19 Increased the readiness level to level II on Sunday, February 14.

A wind chill warning and a freeze warning are in effect from Sunday 6:00 PM until Tuesday at noon. All COVID-19 testing has been canceled until Wednesday, February 17 due to the weather. [Laredo Medical Center is running on emergency power.](#) [TXDOT is discouraging travel on I35 from Laredo to Cotulla.](#) [Travel is also discouraged from Sullivan City to the Webb /Zapata Countyline on US 83.](#) [Due to icy conditions on the roadways.](#)

**DDC 20 – Corpus Christi** (Includes: Aransas, Bee, Brooks, Duval, Jim Wells, Kenedy, Kleberg, Live Oak, Nueces, Refugio and San Patricio Counties)

DDC 20 has moved from a Level III to a Level II (virtual) escalated response conditions beginning at 8:00 AM on Saturday, February 13.

[Corpus Christi International Airport - The Runways at CCIA have been closed due to ice forming on the surfaces. They will remain closed until conditions improve. Most commercial flights on Monday were canceled by the airlines. The airport terminal will remain open for customer and tenant assistance.](#)



**Calhoun County:** Calhoun County Emergency Medical Services will not be transporting patients to Victoria hospitals until the weather allows. All patients will go to Memorial Medical Center Hospital.

**Kleberg County:** Kleberg County is opening the Human Services Building as a warm zone for residents from 10:00 AM Saturday, February 13 until 3:00 PM Monday, February 15.

All Kleberg County offices will be closed on Tuesday, February 16 in conjunction with Monday (President's Day) - due to extreme cold and freezing conditions. Kleberg County Emergency Crews are on standby for anyone in distress.

**Nueces County:** The City of Corpus Christi is working with multiple local homeless agencies to ensure shelter, food, blankets, and clothing are provided for those in need during the severe cold and inclement weather. The Salvation Army has been identified as the lead agency in providing emergency shelter. If the Salvation Army exhausts their intake accommodations, individuals will be referred by the Salvation Army to other shelters expanding their intake.

Nueces County EOC is fully activated for this winter event. Most EOC members will be remotely operating. Nueces County is in communication with City of Corpus Christi on all warming center and shelter options. The EOC is working with Robstown and the Western cities of Agua Dulce, Bishop, Driscoll, and Petronila. Nueces County is declaring a local state of emergency which is in progress as well as anticipate closing Nueces County buildings through Tuesday.

The City of Corpus Christi, in partnership with the American Red Cross, Mother Teresa Shelter, and the Gulf Coast Humane Society, has activated a Short-Term Shelter at the American Bank Center (ABC). The shelter opened Sunday night had 39 guests stay overnight. Pets belonging to guests were transferred to the humane society. The city has coordinated with a group to do outreach for Monday, notifying homeless of the temporary shelter at the ABC. They have teams distributing warm clothes and blankets at these sites. The Salvation Army is also housing guests at their facility, at this time they are at capacity. If someone shows up at the Salvation Army, the City will be notified and arrange for transportation to the ABC Shelter.

The City also is working on an operational plan to offer daytime warming centers within the city limits.

Additionally, the City has engaged numerous state and local agencies, including the Texas Department of Emergency Management, Texas Department of Transportation, the Port of Corpus Christi, Nueces County, AEP of Texas, the Corpus Christi Council of Governments, the Downtown Management District, Christus Spohn, the Robstown Fire Department, and the American Red Cross.

**Port of Corpus Christi:** Coordinating with TxDOT to ensure Joe Fulton International Corridor bridge remains pretreated to prevent ice. City of Corpus Christi has provided signage and will assist with responding to bridge as needed if ice accumulation is detected. The Port Police Department will closely monitor. Port Emergency Management continues to share weather updates with port users and is monitoring for stakeholder operational concerns. [The Aransas-Corpus Christi Pilots have stopped boarding vessels due to Gale Force Winds and Record Low Temperatures.](#) This applies to all areas of the Ship Channel.

**San Patricio County:** Ingleside on the Bay will be on a boil water notice until cleared by TCEQ. Water issues developed due to electric grid system outages. Generators have been put in place and tanks are being filled.

**DDC 21 – Weslaco** (Includes: Cameron, Hidalgo and Willacy Counties)

**Cameron County:** Shelters are now open at the Ozanam Center in the City of Brownsville and Loaves and Fishes in the City of Harlingen.

**Hidalgo County:** Shelters are now open at the Lucero Del Norte Community Church and the Mercedes Safe Dome in the City of Mercedes, the Vanguard Academy Gymnasium in the City of Pharr, the Salvation Army in the City of McAllen, and the Mission Parks & Recreation in the City of Mission.

**DDC 24 Del Rio** (Includes: Dimmit, Edwards, Kinney, La Salle, Maverick, Real, Uvalde, Val Verde and Zavala Counties)

DDC 24 will remain at Level III, Increased Readiness. DDC 24 is not anticipated to be activated.

**Dimmit County:** Reports Carrizo Springs CISD reports; Tuesday February 16 Staff to report at 9:30am. Students at 10:00am. Warming shelters remain on standby. [Power outages in parts of Asherton and Big Wells.](#) Carrizo Water Department is addressing lack of water in parts of the city. 2<sup>nd</sup> dose of vaccinations still on going at the Dimmit County Rodeo Arena and Convention Center.

**Edwards County:** [Rocksprings ISD is cancelling their staff development for teachers tomorrow.](#) No word on students coming back to school on Tuesday yet. Information from the Sheriff's Office; FM 2995 is the only road closed because of down power lines. TX55 North has several power lines down up to FM2995 but it is not closed, poles are in the right of way. The crews have not made it out to TX41. FM2523 is not closed just icy conditions.

**La Salle County:** Half of La Salle County is reported without electricity, along with the La Salle County EOC area. The Sheriff's Dept. Communications generator is not

functioning, crews are working to restore it; presently working at the EOC which is under generator power.

**Maverick County:** Maverick County/City of Eagle Pass have opened a shelter at the EP Multi-Purpose Center, 480 S. Adams, Eagle Pass, TX. Eagle Pass ISD has cancelled all remote learning due to power outages.

**Real County:** Leakey ISD (LISD) will have a two-hour delayed start on Tuesday, 2/16/21. They will continue to monitor the weather and make additional adjustments to this week's schedule as needed. Power outage at Twin Forks subdivision has not been restored and remains since 8:00pm last date. Camp Wood is also reporting power outages.

**Uvalde County:** AEP has advised they are shedding power across the region. Approximately 85 percent of residents in Uvalde county and the City of Uvalde are without electricity.

**Val Verde County:** The Del Rio Civic Center, 1915 Veterans Blvd, has been made available as a warming shelter; it is operational.

**Zavala County:** Monday, Crystal City ISD - 100% remote learning. All teachers working from home. Maintenance will report at 10:00 am. There has been loss of electricity in some parts of the county and city, affecting Housing Authority. No accidents have been reported.

#### **Region 4 (Includes DDCs 8, 9, and 10)**

**DDC 8 El Paso** (Includes: Brewster, Culberson, El Paso, Hudspeth, Jeff Davis and Presidio Counties)

**Culberson County:** Culberson County ISD will have virtual learning until Wednesday.

**DDC 9 Midland** (Includes: Andrews, Borden, Dawson, Ector, Gaines, Glasscock, Howard, Martin, Midland and Winkler Counties):

The Salvation Army and at least one local non-profit are conducting warming shelters. If the situation worsens and they need to set up a shelter the Red Cross has offered logistical support. Team Rubicon has offered manpower.

**Howard County:** The City of Big Spring submitted a disaster declaration on February 13.

**DDC 10 – San Angelo** (Includes: Coke, Concho, Crockett, Irion, Kimble, Mason, McCulloch, Menard, Reagan, Schleicher, Sterling, Sutton and Tom Green Counties)

The warming center at the First Baptist Church in Junction remains open. The Texas Department of Transportation (TxDOT) continues to run sand trucks and plows.

### **Region 5 (Includes DDCs 1, 2, 3, and 7)**

**DDC 1 Amarillo:** DDC 1 moved to Level II (Escalated Response Conditions) at 6:00pm February 13, for winter weather and extreme cold temperatures. DDC partners are virtual.

West Texas A&M University--Virtual learning through Tuesday essential personnel will report to campus as usual. TTUHSC-Amarillo--Closed Monday facilities, classes and TTP clinics are closed.

**DDC 2 – Lubbock** (Includes: Bailey, Cochran, Crosby, Dickens, Floyd, Garza, Hale, Hockley, King, Lamb, Lubbock, Lynn, Motley, Terry and Yoakum Counties)

A winter weather advisory is in effect from 9 a.m. to 6 p.m. A combination of very cold temperatures and low-level moisture will lead to light freezing rain and snow across the southwestern South Plains and snow across the central South Plains and entire Rolling Plains this afternoon into Wednesday. Accumulations of less than an inch to an inch are expected for much of the area with the southern Texas Panhandle and northern Rolling Plains expected to receive 2 to 4 inches of snow. Any additional accumulations will worsen already hazardous road conditions and any moisture on area roadways or sidewalks that may have melted will refreeze leading to slick surfaces. Caution should be used if travelling tonight through Friday morning. In addition, the already in place arctic airmass will remain over the area through Friday with high temperatures well below freezing and low temperatures in the single digits and low teens each night.

- Portions of the District are experiencing power interruptions. Some interruptions have lasted for more than 4 hours causing issues with jurisdiction water wells and lift stations.

**DDC 3 – Wichita Falls** (Includes: Archer, Baylor, Clay, Cottle, Foard, Hardeman, Jack, Wichita, Wilbarger and Young Counties)

A wind chill warning is in effect through Tuesday morning as well as a Winter Storm Warning and Advisory for Tuesday and Wednesday. Wind chills of -20 can be expected now and through morning. The next storm is forecasted to begin Tuesday around noon and could produce an additional 1-4" of accumulation across the district. Average temperatures across the district is -3 degrees and the windchill is around -19 degrees.

Wichita Falls Regional Airport has cancelled all flights through Thursday morning, February 18.

**DDC 7 – Abilene** (Includes: Brown, Callahan, Coleman, Comanche, Eastland, Fisher, Haskell, Jones, Kent, Knox, Mitchell, Nolan, Runnels, Scurry, Shackelford, Stephens, Stonewall, Throckmorton and Taylor Counties)

**Jones County:** Due to power outages, the City of Abilene was forced to shut off water at all 3 of the city's water treatment plants. It is unknown when water will be restored. Whenever service is restored, city advises residents to boil water.

**Region 6 (Includes DDCs 11, 12, 17, 18A, 18B, and 23)**

**DDC 11 – Waco** (Includes: Bosque, Falls, Freestone, Hill, Limestone and McLennan Counties)

**Falls County:** City of Marlin Water Treatment Plant Out of Service – Mechanical. [A boil water notice is in effect until lifted by TCEQ.](#)

**Hill County:** Hill County submitted a disaster declaration on February 12.

**McLennan County:** There are two open warming centers in Waco/McLennan County. A traffic accident damaged an electrical service line on State Hwy-6 and Del Mar Ranch Road. Power is out for about 285 power meters. [City of Mart Water Treatment Plant is out of service due to loss of power.](#)

**DDC 12 – Austin** (Includes: Bastrop, Blanco, Burnet, Caldwell, Fayette, Hays, Lee, Llano, Travis and Williamson Counties)

**Bastrop County:** The EOC has been communicating with County and TxDOT road crews throughout the day on a patch directly. The Emergency Communications Center is staffed up and staying overnight at the Communications Center.

**Burnet County:** City of Marble Falls activated its EOC at Level II to monitor conditions and prepare to respond to the winter weather. The EOC is virtual and will not be activated overnight. [City of Marble Falls submitted a disaster declaration and letter to the Governor on February 15. Kingsland Hills Nursing Home is on backup power that does not operate the heating system. They have 48 patients and only three portable heaters. Windchimes, an Assisted Living Center, has 32 patients and does not have power and does not have a backup generator. No Heaters are available and all resources have been exhausted. Power is out at the Sunrise Beach Water Plant conserving water until power is restored. Marble Falls opening warming centers.](#)

**Caldwell County:** State Hwy 21 through Mustang Ridge was closed by Mustang Ridge Police Department, Caldwell County Sheriff's Office, and TXDPS due to icing.

**Gillespie County:** Gillespie and Llano Counties have contacted AT&T to resolve an outage with a Gillespie cell tower. Work is in progress.

**Hays County:** The City of San Marcos issued a disaster declaration on February 13.

**Travis County:** Travis County issued a disaster declaration on February 14. City of Austin: The city has activated its cold-weather and shelter plan.

**Williamson County:** The Williamson County EOC activated at Level II at 2:00PM February 13, 2021.

The City of Georgetown issued a disaster declaration on February 14.

**DDC 17 – Victoria** (Includes: Calhoun, DeWitt, Goliad, Gonzales, Jackson, Lavaca, and Victoria Counties)

**Calhoun County:** Calhoun County EMS will not be transporting patients to Victoria hospitals until the weather allows. All patients will go to Memorial Medical Center Hospital.

**DDC 23 – Killeen** (Includes: Bell, Coryell, Hamilton, Lampasas, Milam, Mills, and San Saba Counties)

TxDOT and local officials are reporting no significant roadway issues. All major roadways are open and unobstructed to travel. Some county rural roadways may have icy patches. TxDOT will continue to monitor roadway conditions within the district.

## **STATE RESOURCES COMMITTED**

**Texas Division of Emergency Management, Texas A&M University System (TDEM):** The State of Texas SOC remains at Readiness Level II Escalated Response Conditions, with Daily Operations staff coordinating daily weather calls, processing disaster declarations, letters to the Governor, Disaster Summary Outlines, State of Texas Assistance Requests (STARs), preparing Snapshots and the State SITREPs. The State Management Team (SMT) continues conducting operations in the Remote SOC, working together with activated members of the State’s Emergency Management Council. TDEM District Coordinators are working closely with their local emergency management partners and various members of the public health community to assist with unmet needs and resources.

Texas Propane Gas Association received an Hours of Service waivers were from the Texas Department of Public Safety to ensure propane delivery drivers could support the additional calls for propane service to support home heating needs.

**Texas Division of Emergency Management - Communication Coordination Group (TDEM-CCG):** [The CCG has received several reports of sporadic communications outages from Central to West Texas.](#)

- Gillespie / Llano Counties: Cell Tower outage.
- Howard Co: VFD Tower Down.
- Kimble Co: Land Mobile Repeater Down
- Mason Co: LM Radio system was temporarily down.
- Statewide: sporadic cell phone service interruptions.

TDEM's ESF 2 partners have provided the following support:

- Amateur Radio Operators – ARES / RACES and other groups are supporting local EOCs, DDCs and local entities by reporting local outages; activating Local VHF / UHF repeater networks, placing equipment and personnel on standby to provide additional resources as may be needed.
- DPS IOD – Communications - is monitoring and providing frequency and equipment assistance to local jurisdictions experiencing communications outages.
- Commission State Emergency Communications (CSEC): Monitoring PSAP / 911 status.
- AT&T, Sprint /T-Mobile, Verizon and other carriers are monitoring the situation and providing assistance to local customers as needed. They are deploying resources into impacted areas when conditions allow safe travel.

**Texas A&M AgriLife Extension Service (AgriLife):** County Extension Agents standing by to assist local jurisdictions as needed with livestock and crop issues due to winter weather impacts.

Extension activated one DAR agent on February 14 to assist TEEEX with a delivery of 2,695 blankets from the Lufkin warehouse to Houston Transtar Shelter to support operations.

**Texas A&M Engineering Extension Service (TEEX):** Standing by to provide search & rescue assistance as well as personnel to support winter weather operations as needed.

**Texas A&M Forest Service (TFS):** The Texas A&M Forest Service is currently supporting local agencies, TDEM, and TxDOT with winter weather support. TFS Crews are currently assisting in the Northwest, Central, West, Panhandle, East and South Branches with (7) Motor Graders, (33) 4x4 Vehicles, and (71) support personnel. (1) Short Planning Section Team (4 personnel) is also assigned to DDC 5 & 6 for Incident Action Plan Development and Situation Reports. (5) Saw Crews, and (31) 4x4 vehicles remain available and ready for response.



- The TFS Panhandle Branch is supporting the TxDOT Amarillo and Childress Districts. Childress resources have patrolled 993 miles of tier 1 and tier 2 roads and assisted 3 disabled vehicles. Amarillo Crews bladed 114 miles around the Amarillo area. Childress crews resumed patrolling operations overnight beginning at approximately 10:00PM February 15. Amarillo resources completed rehabilitation of equipment and are coordinating with TxDOT in preparation for the next round of snow impacts tomorrow and will work to clear access on IH-40 from Amarillo starting the afternoon of February 16 and as needed into the night.
- The TFS West Branch is supporting TxDOT winter weather operations, in Coke, Kimble, Kerr, Mernard and Tom Green Counties, along with the San Angelo District. Crews are clearing IH-10 access ramps and improving FM 2169 for emergency services use. Crews have also worked to clear 85 miles on FM 2034 and HWY 87 between the towns of Water Valley and Robert Lee. Ambulance escorts continue as needed, throughout this area. Local San Angelo resources are tied in with the local TxDOT District and are blading roads within the area.
- The TFS Northwest Branch is supporting TxDOT Abilene and Eastland Districts, and is currently assigned to clear FM 707, FM 89, and FM 126 in Taylor County. Crews completed blading of approximately 193 miles and assisted 3 motorists. Additional Crews are working in DDC 3, patrolling major roads throughout the counties and looking for stranded motorists. Crews in the Wichita Falls region patrolled approximately 1052 miles and assisted 3 stranded vehicles.
- The TFS North Branch is assigned to DDC 4A for deliveries of blankets, water, and food for residents without power.
- The TFS East Branch is currently supporting DDC 5 & 6 with a short Planning Section Team for Incident Action Plan development and Situation Reports throughout the Disaster District.
- The TFS Central Branch is currently staged in Williamson County to support the TxDOT Waco District.
- The TFS South Branch is currently supporting the Fredericksburg Fire Department, conducting welfare checks and supporting other needs in coordination with the Gillespie County EOC.
- (2) TFS/ESF 4 Representatives are currently assigned to the State Operations Center for resource mobilization and coordination support.

**Public Utility Commission of Texas (PUC):** Monitoring and communicating with power providers as well as tracking power outages due to winter weather. ERCOT has issued an Operating Condition Notice (OCN) for the potential extreme cold weather which will run from February 11 through February 16.

**Texas Animal Health Commission (TAHC):** The TAHC is maintaining situational awareness of the evolving weather situation. The TAHC is activated to the SOC, is monitoring weather calls, and is coordinating with TAHC Regional Offices and animal response partners at the local, state, and federal level for support of local jurisdictions. Coordination communications have occurred with ESF-11 partners regarding potential hay/feed or other livestock-related support following the storm. All partners have indicated no need at this time, and visible local preparation for storm amongst local producers/partners. The TAHC received communication from the poultry industry with concerns regarding gas curtailments: the issue has been mitigated by the private company, and there are no unmet needs at this time. TAHC staff remain on standby for response to any animal issues which may arise. Rolling energy brownouts are beginning to impact both TAHC staff and animal stakeholders, and the TAHC is beginning to receive reports of small numbers of carcass disposal being conducted. All ESF-11 partners are working to maintain contact and situational awareness of any concerns related to these issues.

**Texas Department of Transportation (TxDOT):** In response to snow and ice TxDOT is performing winter weather operations by pretreating and treating roads.

- There are 5,251 locations on state roadways that are impacted by Snow/Ice with 48 road closures due to icy conditions.
- All districts and EOCs are currently operating 24 hours a day.
- TxDOT is working winter operations in all 25 districts as each district had impacts of winter weather. 2,700 TxDOT employees and 2,100 pieces of equipment were directly involved in winter weather operations across the state Sunday Feb. 14, 2021.
- Priority is to maintain the state-maintained highway system with our inventory of materials.
- TxDOT is monitoring and shifting material as needed. Replacement materials have been ordered and are waiting for the request to be filled.
- Contract and County forces are also being utilized providing operators and motor graders to assist in plowing roadways in districts across the state. Rental motor graders are also being utilized by TxDOT forces.
- TFS motor graders and support crews continue to support road clearing operations across the state.
- There has been coordination with the Public Utility Commission and fuel vendor to prioritize routes for trucks transporting materials to power generation plants.
- TxDOT is utilizing their permanent digital message boards to display advisory of the weather conditions to the traveling public.
- TxDOT is currently staffing the SOC 24 hours a day through the duration of this event.

**Texas Department of Public Safety (TXDPS):** Texas DPS has prepared statewide resources to appropriately respond to this severe weather event. All Texas Highway Patrol (THP) troopers are fully prepared to respond as conditions dictate. Some areas already impacted by the severe weather are ensuring 24-hour trooper coverage. THP Disaster District Chairs are communicating with TxDOT, TDEM, and TPWD to discuss emergency response plans. The Northwest, North,

West, and Southeast Texas regions are coordinating with state police partners from New Mexico, Oklahoma, Arkansas, and Louisiana to ensure prompt responses to potential interstate highway issues. Texas DPS has troopers and equipment responding statewide to events in areas adversely affected by the winter weather event.

All assigned THP troopers are actively investigating crashes and assisting stranded motorists around the clock since the start of the winter weather event. Troopers are clearing traffic and continue to patrol and monitor the affected areas. THP is working closely with state partners TxDOT, TDEM, TFS, TPWD and TMD during this event. THP personnel are ready to assist with request for assistance.

THP troopers investigated 1,396 crashes, with 376 injuries and 19 fatalities, across all Regions through Saturday, February 14.

**Texas Military Department (TMD):** TMD will support TXDPS Texas Highway Patrol (THP), Texas Parks and Wildlife Department (TPWD), and the Texas Department of Transportation (TxDOT) in protecting life and property during the winter weather in Texas. TMD has [deployed 91 personnel](#) to be staged in Amarillo, Wichita Falls, Dallas/Fort Worth, Abilene, Waco, and Tyler.

**Texas Parks and Wildlife Department (TPWD):** TPWD has prepared resources for this winter weather event consisting of Texas Game Wardens and State Parks Police Officers. Also, TPWD has specialized equipment and resources available to support requests including our Aviation, UAS, and K9. TPWD is continuing to be advised of the current weather conditions and are maintaining a state of readiness.

- Game Wardens and Park Police Officers continue to patrol in areas affected by the winter weather and are working in conjunction with Texas DPS Troopers and other first responders assisting stranded motorist and traffic control due to weather conditions.
- TPWD has personal staffing the Remote SOC during a 24hr activation and is communicating with TxDOT, TDEM, Texas DPS, TMD and other agency representatives to discuss response plans and needs for support.

**Public Utility Commission of Texas (PUC):** Monitoring and communicating with power providers as well as tracking power outages due to winter weather. ERCOT has issued an Operating Condition Notice (OCN) for the potential of extreme cold weather which will run from February 11 through February 16.

**Infrastructure**

**Shelters/Warming Centers Activated:**

<b>Region</b>	<b># Reported</b>
1	32
2	14
3	22
4	14
5	30
6	16
<b>Total</b>	<b>128</b>

**Power Outages: Source Eagle-I as of 5:00 AM**

<b>Region</b>	<b># Affected</b>
1	1,058,160
2	626,655
3	325,745
4	115,204
5	68,926
6	1,001,409
<b>Total</b>	<b>3,196,099</b>

**STATE RESOURCES COMMITTED**

<b>Agency</b>	<b>Resource Kind and Type</b>	<b>Personnel</b>	<b>Equipment</b>	<b>Status</b>	<b>Location</b>
TAMUS TFS	Motor Graders & 4x4 Vehicles	11	6	Assigned	DDC 7
TAMUS TFS	4x4 Vehicles	8	4	Assigned	DDC 3
TAMUS TFS	Motor Graders & 4x4 Vehicles	5	5	Assigned	DDC 4A
TAMUS TFS	Motor Graders & 4x4 Vehicles	4	3	Assigned	TxDOT Waco District
TAMUS TFS	Motor Graders & 4x4 Vehicles	7	3	Assigned	Kimble/Menard Counties
TAMUS TFS	Motor Graders & 4x4 Vehicles	8	5	Assigned	TxDOT Amarillo District
TAMUS TFS	Motor Graders & 4x4 Vehicles	2	2	Assigned	TxDOT San Angelo District
TAMUS TFS	Motor Graders & 4x4 Vehicles	10	6	Assigned	TxDOT Childress District
TAMUS TFS	4x4 Vehicles	7	2	Assigned	Gillespie County

Agency	Resource Kind and Type	Personnel	Equipment	Status	Location
TAMUS TFS	TFS/ESF 4 Representatives	2		Assigned	Austin
TAMUS TFS	5 Saw Squads	25		Available	Statewide
TAMUS TFS	4x4 Vehicles		31	Available	Statewide
TAMUS TFS	Short Planning Module	4		Assigned	DDC 5&6
TAHC	SOC Representative	2		Assigned	Austin
TAHC	Office Staff	6		Assigned	Virtual
TAHC	Regional Mgmt.	18		Assigned	Statewide
TPWD	SOC Liaison	2	2	Assigned	Austin
TPWD	Game Wardens	432	432	Activated	Statewide
TPWD	Park Police Officers	90	90	Activated	Statewide
TPWD	Aircraft	2	1	Activated	Austin
TPWD	UAS Team	50	50	Activated	Statewide
TPWD	K9 Team	9	9	Activated	Statewide
TMD	Winter Weather Package	18	6	Activated	Amarillo
TMD	Winter Weather Package	18	5	Activated	Wichita Falls
TMD	Winter Weather Package	14	6	Activated	Dallas/Fort Worth
TMD	Winter Weather Package	15	6	Assigned	Abilene
TMD	Winter Weather Package	16	7	Assigned	Waco
TMD	Winter Weather Package	9	4	Activated	Tyler
TMD	TMD Military District Coordinator	1		Assigned	DDC Hurst
TXDPS	SOC Liaison	2	2	Activated	Austin
TXDPS	THP Troopers and Vehicles	2,211	2,211	Assigned	Statewide
TXDPS	THP Troopers and Vehicles	1,089	1,089	Activated	Statewide
TxDOT	SOC Liaison	3		Assigned	Austin
TxDOT	Statewide	2,700	2,166	Assigned	Statewide
Texas Agrilife	SOC liaison	1		Assigned	Austin
Texas Agrilife	Administration	2		Assigned	College Station

**FINAL COMMENTS:** The State Operations Center (SOC) is at Level II (Escalated Response Conditions). The Texas Division of Emergency Management (TDEM) continues to monitor the situation and will provide additional situation reports as needed.

**The four levels of SOC activation are:**

- Level I (Emergency Conditions)
- Level II (Escalated Response Conditions)
- Level III (Increased Readiness Conditions)
- Level IV (Normal Conditions)

*This Situation Report can be found on the TDEM webpage at:  
<https://tdem.texas.gov/situation-reports/>*

**W. Nim Kidd, MPA, CEM**

Chief – Texas Division of Emergency Management  
Vice Chancellor for Disaster and Emergency Services  
Texas A&M University System

<https://tdem.texas.gov/>

Twitter: [@TDEM](#)

(512) 424-2208 (24/7)