

GENERAL NOTES:

1. ALL BACKFLOW PREVENTER VAULTS SHALL BE PRECAST AND DELIVERED WITH ALL INTERNAL PIPING AND PARTS COMPLETE.
2. ALL PIPE MUST BE DUCTILE IRON & ALL FITTINGS MUST BE FLANGED IN VAULT.
3. CONCRETE SHALL BE CLASS "F" WITH DESIGN STRENGTH OF 4200 PSI @ 28 DAYS (702.2.4.2). UNIT IS OF MONOLITHIC CONSTRUCTION AT FLOOR AND FIRST STAGE OF WALL WITH SECTIONAL RISER TO REQUIRED DEPTH.
4. GRADE 60 REINFORCED, STEEL REBAR CONFORMING TO ASTM A615 ON REQUIRED CENTERS OR EQUAL.
5. 1/4" ALUMINUM DIAMOND PLATE COVER WITH EXTRUDED ALUMINUM FRAME. HATCH TO BE FURNISHED WITH 316 STAINLESS STEEL SNAP LOCK & STAINLESS HINGES.
6. BACKFLOW ASSEMBLY SHALL BE FACTORY ASSEMBLED IN VAULT & HYDROSTATICALLY TESTED PRIOR TO DELIVERY.
7. MODEL NUMBERS ARE FOR PARK EQUIPMENT COMPANY, MODELS ARE DMCBP-MF (FIRE SERVICE) OR BP-M (DOMESTIC). UNITS BY OTHER MANUFACTURERS MUST BE SUBMITTED TO BE APPROVED AS EQUALS.



101 MAIN STREET
HASLET, TX 76052
(817)439-5931
WWW.HASLET.ORG



Know what's below.
Call before you dig.
@least 48 hours prior

CITY OF HASLET
CONSTRUCTION STANDARDS
WATER - 3" AND LARGER SERVICE

CERTIFICATION:
THIS CITY OF HASLET SHEET IS AUTHORIZED FOR USE ON THIS PROJECT BY AUTHORITY OF THE CITY ENGINEER. BY INCLUDING THIS SHEET IN THE CONSTRUCTION SET OF DRAWINGS, THE ENGINEER OF RECORD FOR THE PROJECT IS ALSO CERTIFYING THAT THE CONTENT OF THE DETAILS AND NOTES HAVE NOT BEEN ALTERED FROM THAT RECEIVED FROM THE CITY OF HASLET.

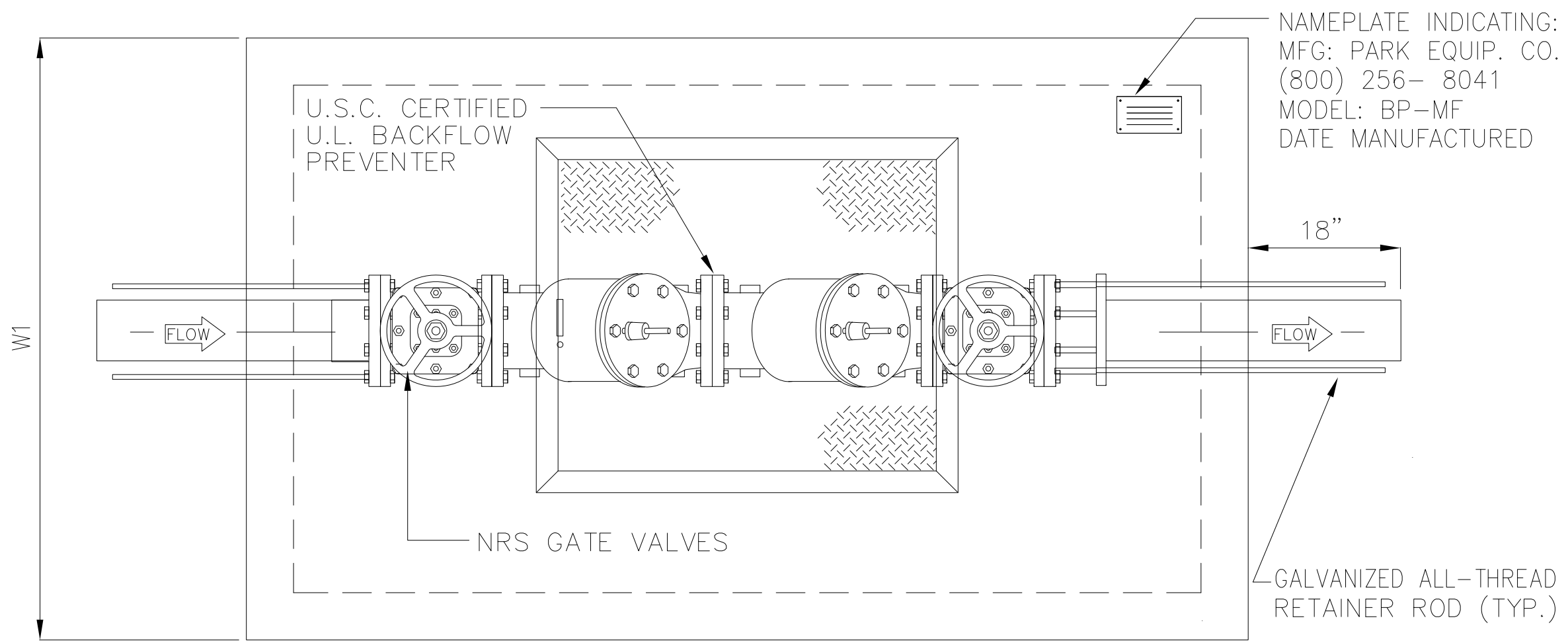
DRAWN: CAD

APPROVED: TNA

DATE: DEC. 2016

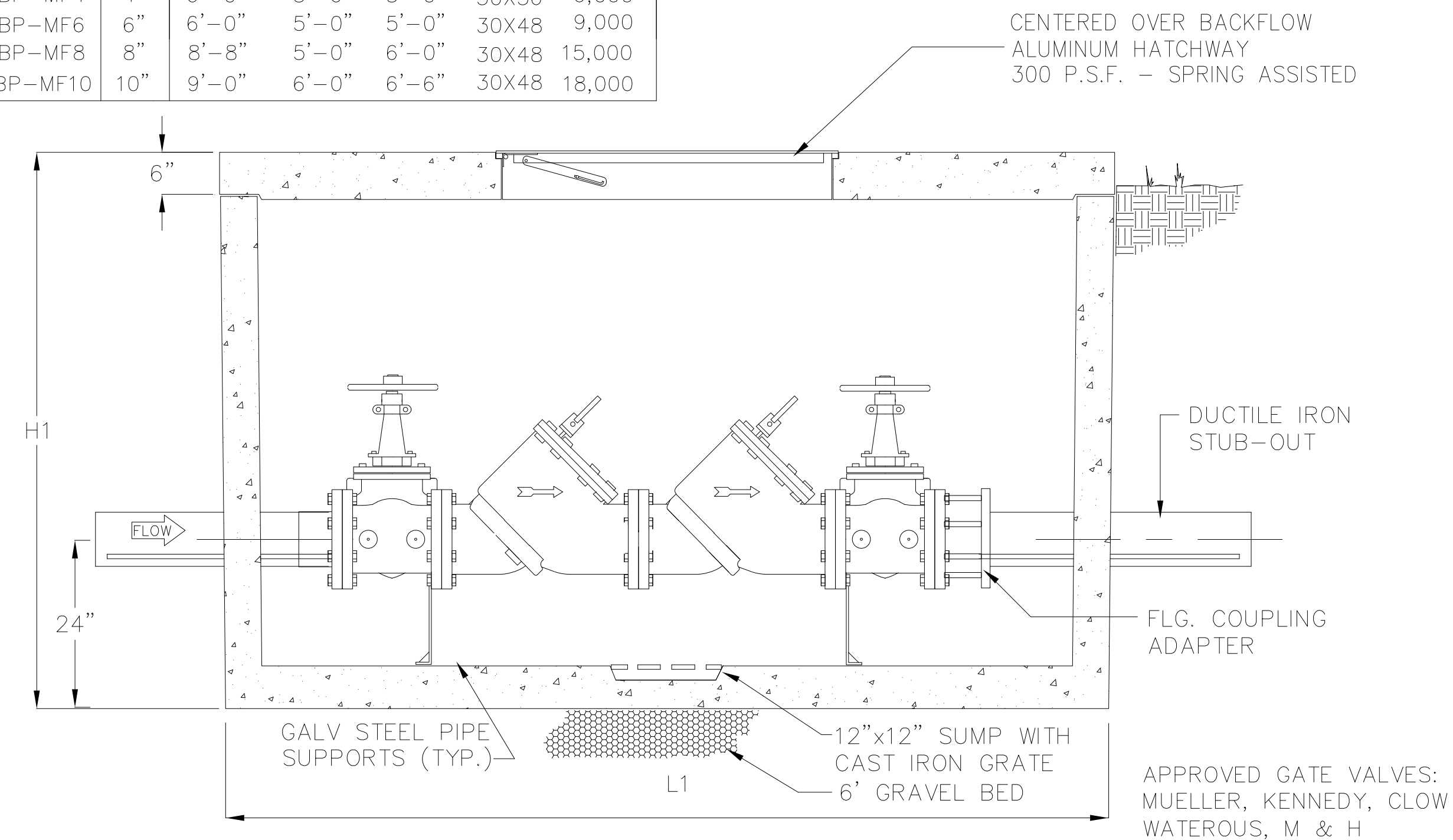
SHEET NUMBER

W4



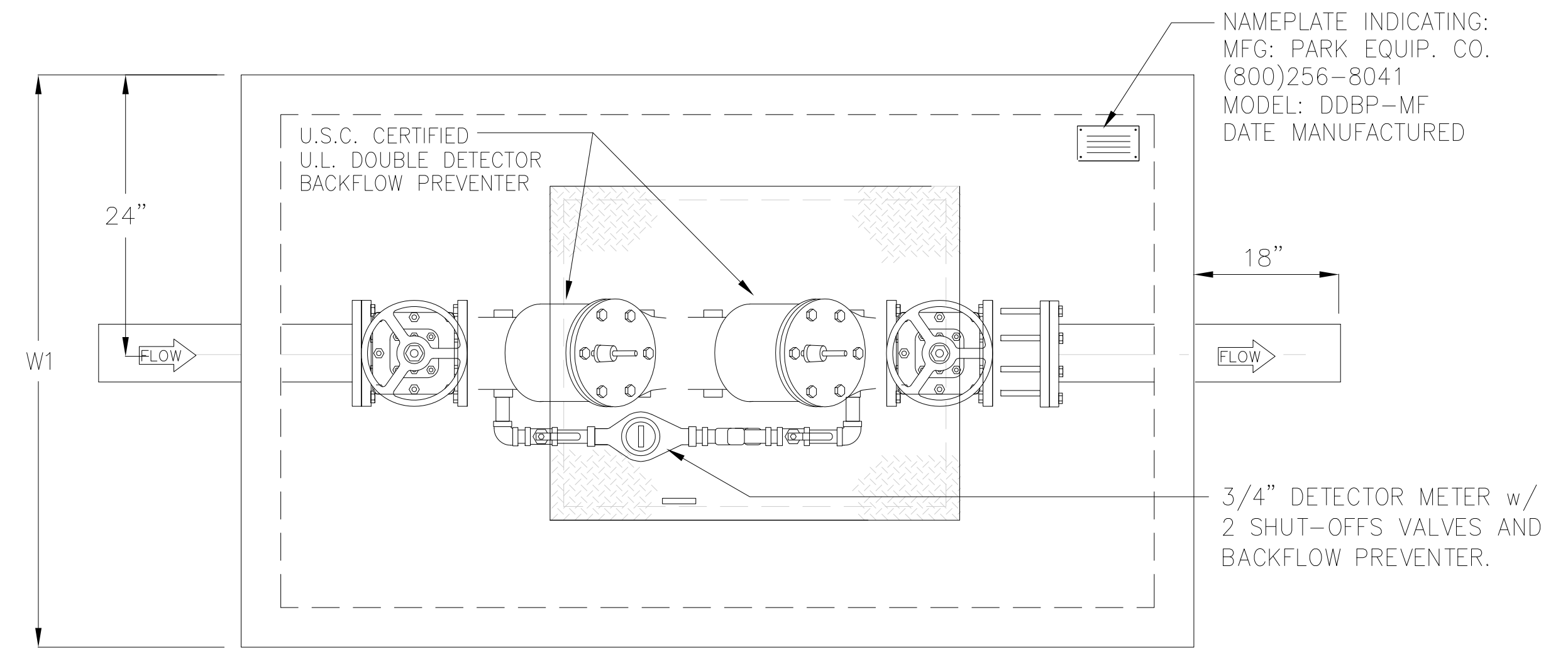
MODEL	SIZE	L1	W1	H1	ALUM. HATCH	WEIGHT LBS
BP-MF3	3"	6'-0"	3'-6"	5'-0"	30X36	6,000
BP-MF4	4"	6'-0"	3'-6"	5'-0"	30X36	6,000
BP-MF6	6"	6'-0"	5'-0"	5'-0"	30X48	9,000
BP-MF8	8"	8'-8"	5'-0"	6'-0"	30X48	15,000
BP-MF10	10"	9'-0"	6'-0"	6'-6"	30X48	18,000

PLAN VIEW



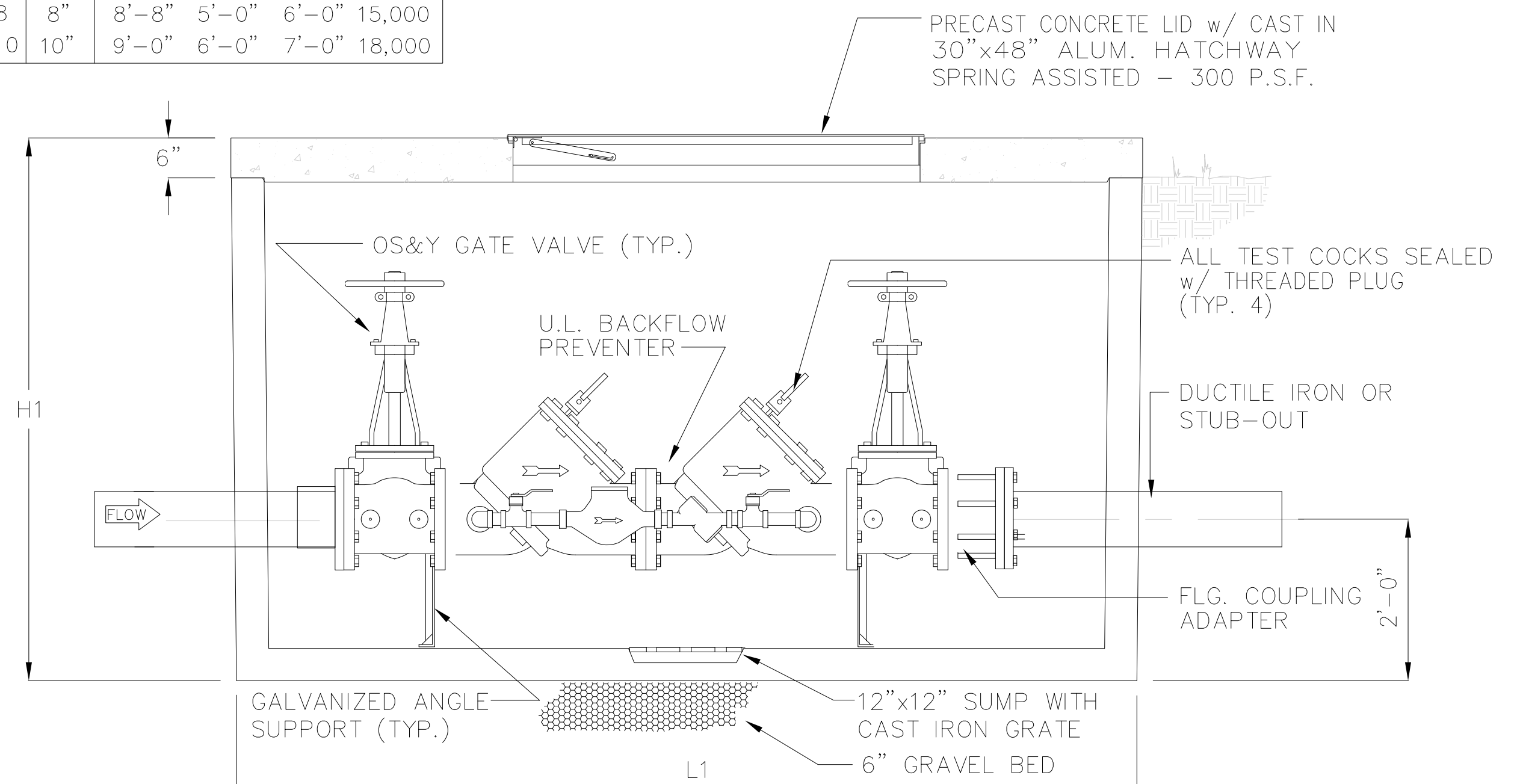
ELEVATION

DOMESTIC DOUBLE-CHECK ASSEMBLY



PLAN VIEW

MODEL	SIZE	L1	W1	H1	WEIGHT LBS
DDBP-MF4	4"	6'-0"	5'-0"	6'-0"	9,000
DDBP-MF6	6"	6'-0"	5'-0"	6'-0"	9,200
DDBP-MF8	8"	8'-8"	5'-0"	6'-0"	15,000
DDBP-MF10	10"	9'-0"	6'-0"	7'-0"	18,000



ELEVATION

FIRE SERVICE DETECTOR
DOUBLE-CHECK ASSEMBLY