

Aviation Related Requirements:

Horizontal Surface

A horizontal plane 150 ft above the established airport elevation, the perimeter of which is constructed by swinging arcs of a specified radii from the center of each end of the primary surface of each runway and connecting the adjacent arcs by lines tangent to those arcs.

The radius of each arc is 10,000 ft. The radius of the arc specified for each end of a runway will have the same arithmetical value.

Conical Surface

A surface extending outward and upward from the periphery of the horizontal surface at a slope of 20:1 for a horizontal distance of 4,000 ft past the horizontal surface.

Approach Surface or Break Slope

A surface longitudinally centered on the extended runway centerline, extending outward and upward from each end of the primary surface; applied to each end of each runway based upon type of approach available or planned for that runway end.

Approach Surface Specifics

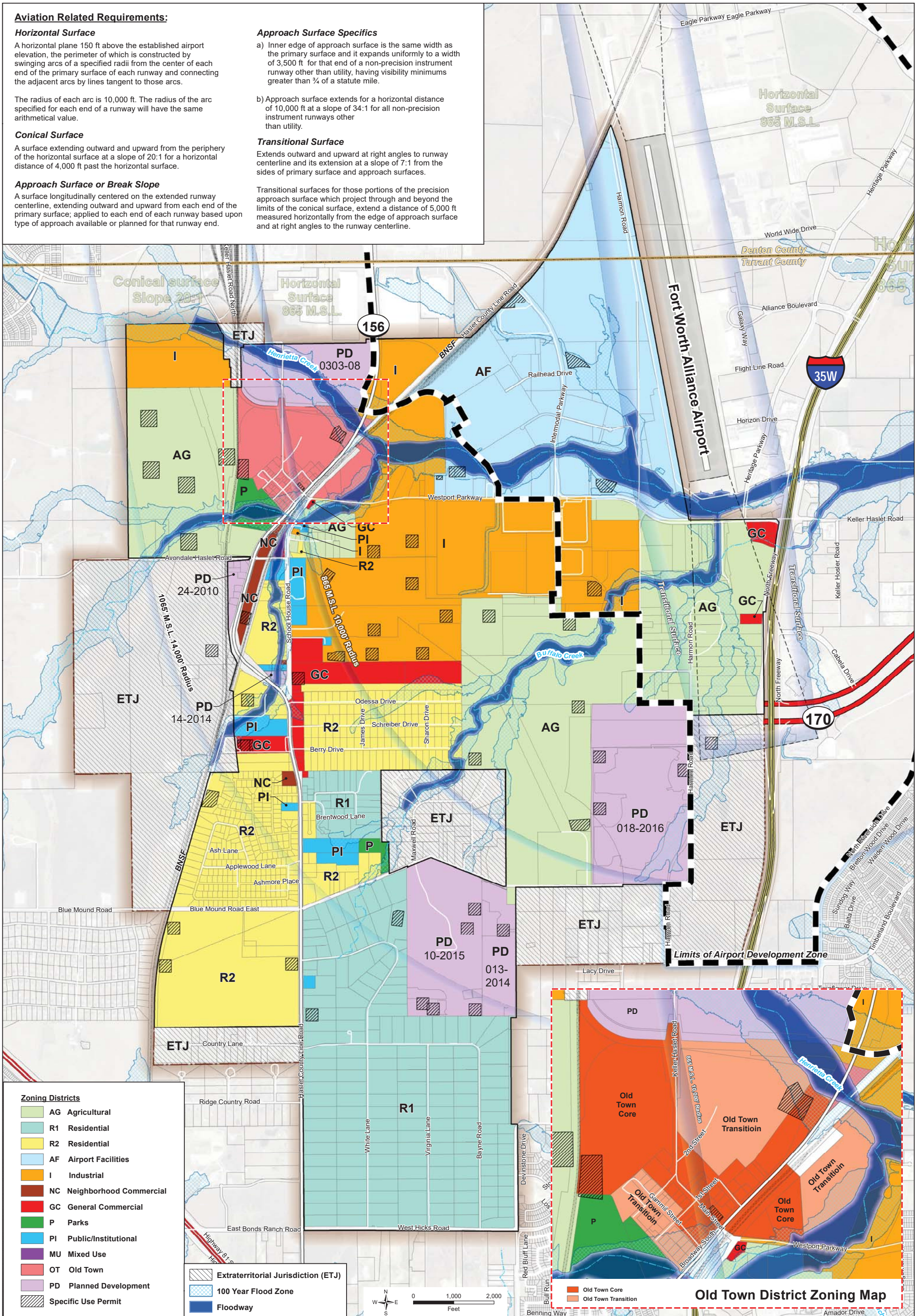
a) Inner edge of approach surface is the same width as the primary surface and it expands uniformly to a width of 3,500 ft for that end of a non-precision instrument runway other than utility, having visibility minimums greater than ¾ of a statute mile.

b) Approach surface extends for a horizontal distance of 10,000 ft at a slope of 34:1 for all non-precision instrument runways other than utility.

Transitional Surface

Extends outward and upward at right angles to runway centerline and its extension at a slope of 7:1 from the sides of primary surface and approach surfaces.

Transitional surfaces for those portions of the precision approach surface which project through and beyond the limits of the conical surface, extend a distance of 5,000 ft measured horizontally from the edge of approach surface and at right angles to the runway centerline.



Zoning Districts

AG	Agricultural
R1	Residential
R2	Residential
AF	Airport Facilities
I	Industrial
NC	Neighborhood Commercial
GC	General Commercial
P	Parks
PI	Public/Institutional
MU	Mixed Use
OT	Old Town
PD	Planned Development
Specific Use Permit	

ETJ	Extraterritorial Jurisdiction (ETJ)
100 Year Flood Zone	
Floodway	

City of Haslet
 101 Main Street.
 Haslet, TX 76052
 www.haslet.org
 (817) 439-5931

Zoning Map
 City of Haslet

Adopted ORD.#
 Revised:
 Print Date:

